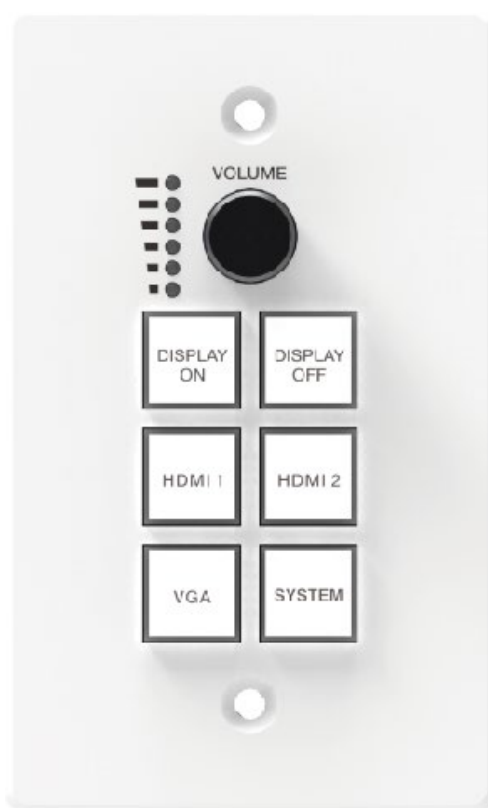




VLWP-3HVG-CTR

Control wall panel for HBT-WPB200U



User Manual

VER 1.0

Thank you for purchasing this product

Please read these instructions carefully for optimum performance and safety before connecting, operating, or adjusting this product. Please keep this manual for future reference.

A surge protection device is recommended.

This product contains sensitive electrical components that electrical spikes may damage surges, electric shocks, lightning strikes, etc. Use of surge protection systems are highly recommended to protect and extend the life of your equipment.

Table of Contents

1. Introduction	3
2. Features	3
3. Package Contents	3
4. Specifications	3
5. Operation Controls and Functions	4
6. System ON/OFF Subroutine	5
7. Display ON/OFF Subroutine.....	6
8. Application Example.....	7

1. Introduction

The control panel supports volume control, video switching, and system control. At the same time, it supports 2 HDMI and one VGA input selection. The RS-232 port on the transmitter connects and provides a power supply to the RS-232 port on the control panel via CAT5e/6/7 cable.

2. Features

- ☆ Supports volume control, video switching, and system control
- ☆ RS-232 port connects between the control panel and transmitter via CAT5e/6/7 cable
- ☆ Supports transmitter power supply to control panel

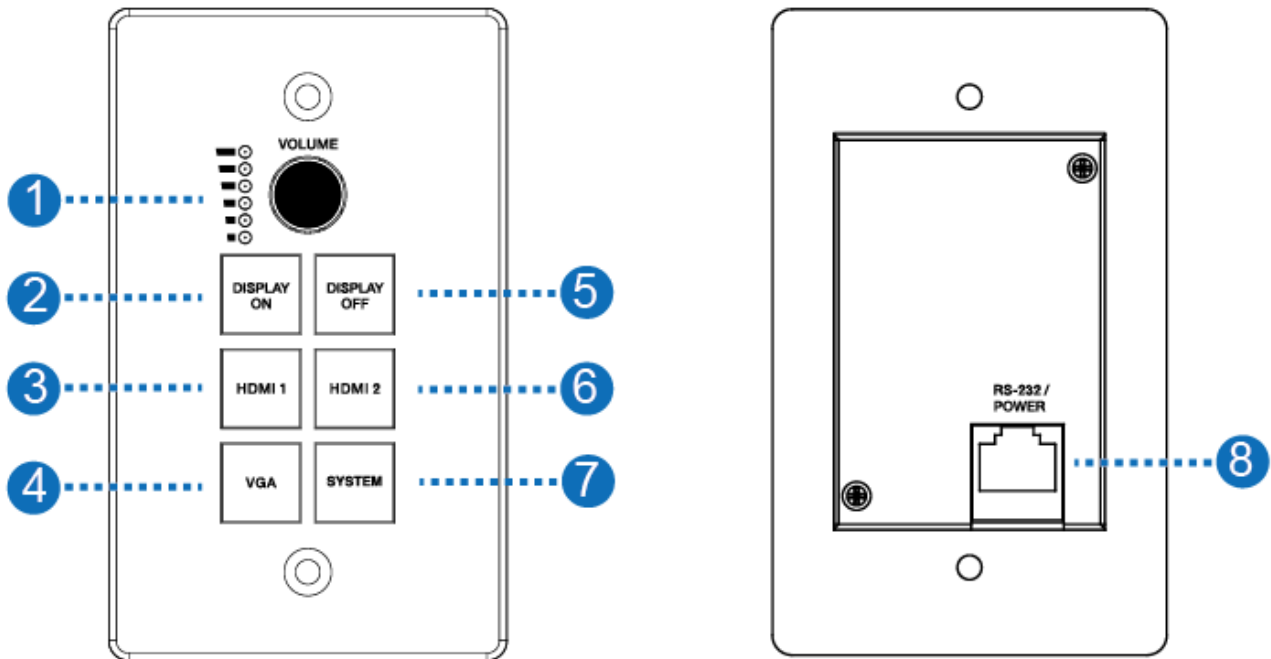
3. Package Contents

- ① 1 x Control Panel
- ② 1 x User Manual

4. Specifications

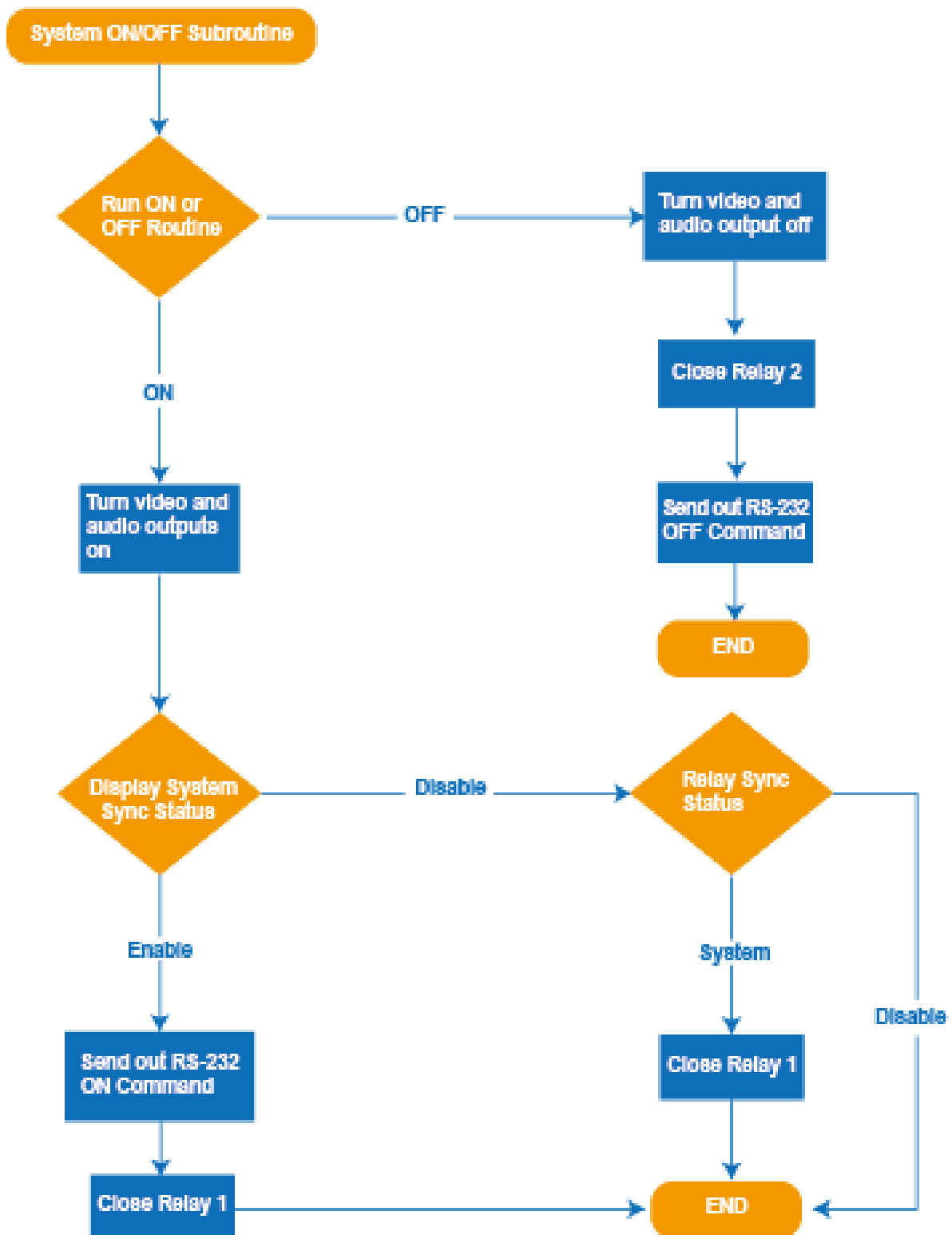
Mechanical	
Housing	Metal Enclosure
Color	White — Front Panel, Black — Rear Panel
Dimensions	114.3mm [W] x 69.9mm [D] x 22.2mm [H]
Weight	180g
Operating Temperature	32 - 104° F / 0 - 40° C
Storage Temperature	-4 - 140° F / -20 - 60° C
Relative Humidity	20 - 90% RH (no condensation)

5. Operation Controls and Functions

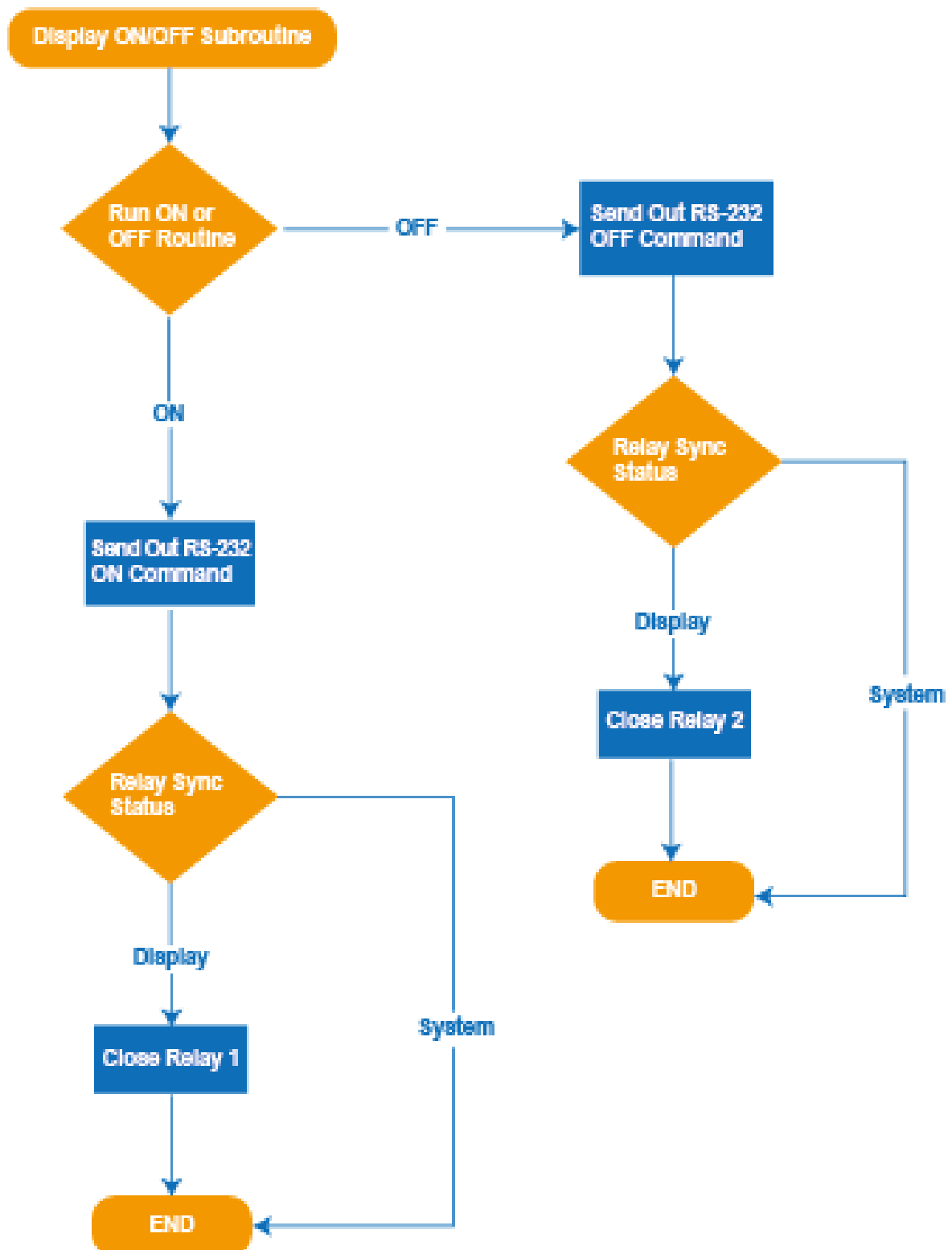


Number	Name	Function description
1	VOLUME Knob and Volume level indicator	Adjust amplifier volume output. <ul style="list-style-type: none"> ▪ Clockwise adjustment to increase the volume. ▪ Counter-clockwise adjustment to decrease the volume.
2	DISPLAY ON	Run Display ON Subroutine; see section 7. Press and hold the button to close relay 1.
3	HDMI 1	Select HDMI 1 signal as the input source.
4	VGA	Select the VGA signal as the input source.
5	DISPLAY OFF	Run Display OFF Subroutine; see section 7. Press and hold the button to close relay 2.
6	HDMI 2	Select HDMI 2 signal as the input source.
7	SYSTEM	Long-press the button for 3 seconds to open or close the system, see section 6.
8	RS-232/POWER	Connect to Transmitter via CAT5e/6/7 cable.

6. System ON/OFF Subroutine



7. Display ON/OFF Subroutine



8. Application Example

